

Article	Description
100000470	Adhesive rubber sheet
	Standard delivered
100006679	Conical head cap MPX-90 (5Pcs)
	Standard delivered (10 pieces)
100009104	Straight Head cap MPX-90 (5Pcs)
	
MPH-90	printhead MPX-90 (tesplate + head caps included)
	
22055423	testplates, 4 pieces (60mm x 60mm)
	Standard delivered

Jaws

EJ-MEDAL	These jaws enable engraving on notary seals, medallions, coasters, paperweights, watches, pendants and other round objects.
----------	---



EJ-PE-MEDAL	These jaws are similar to the normal metal jaws, but they're made out of PE in order to prevent damaging your precious objects.
-------------	---



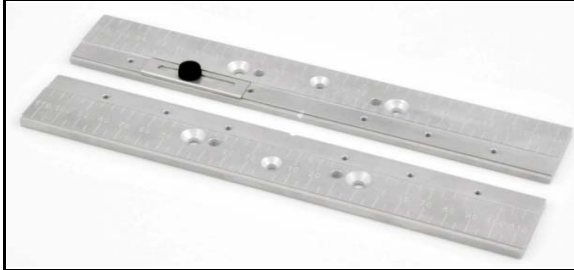
EJ-PIN	These jaws enable engraving on irregular-shaped and unique-sized items. Easy to modify for a special application.
--------	---



EJ-PEN	These jaws are used for holding pens. They have a slot for a pen clip on one side and a V-groove on the other edge.
--------	---



EJ-RULER	These flat jaws secure small flat items, such as name badges with pin backs. Like most others, these jaws are made of aluminium. Aluminium hardly wears out, so the jaws and vices don't lose their compatibility.
----------	--



EJ-FIVE-KIT	Kit of 5 different jaws.
EJ-FOUR-KIT	Kit of 4 different jaws. (= EJ-FIVE-KIT without the EJ-RULER jaw)

